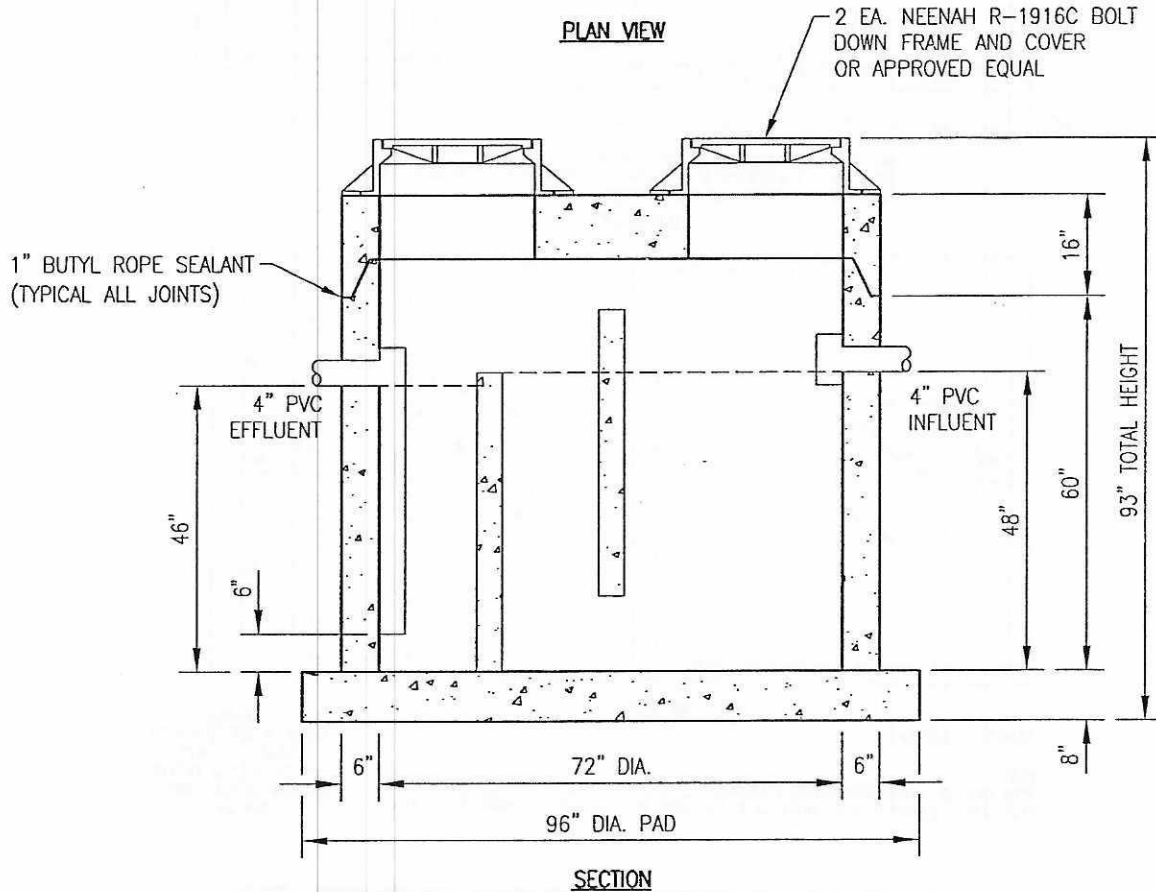


PLAN VIEW



SECTION

GREASETRAP SHALL BE CAPABLE OF WITHSTANDING H-20 LOADING, IF  
LOCATED IN A PAVEMENT AREA.

750 GALLON REINFORCED CONCRETE  
GREASE INTERCEPTOR

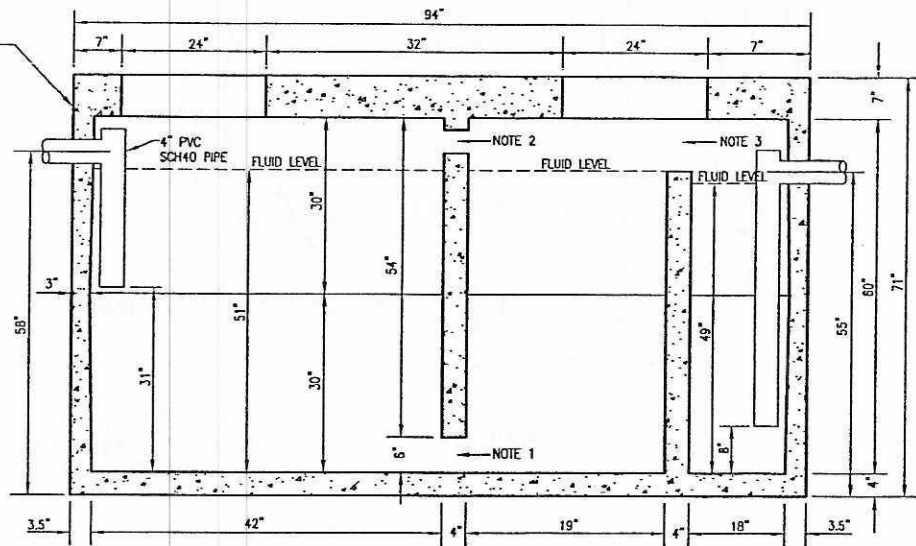


DATE: 7/26/06  
DRAWN BY: DAB

750 GALLON REINFORCED  
CONCRETE GREASE INTERCEPTOR

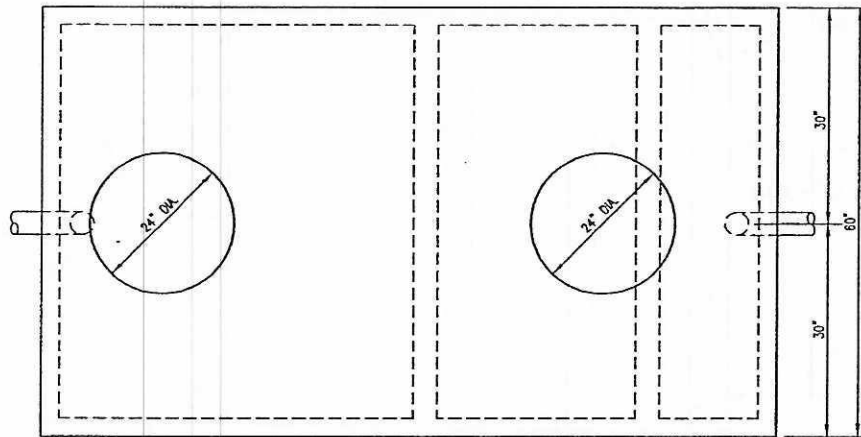
GREASE TRAP  
(750 GALLON)

ADD RISER SECTIONS TO GREASE INTERCEPTOR PER VILLAGE OF SWANSEA SEWER REQUIREMENTS TO ACHIEVE FINISH GRADE ELEVATION



NOTE 1: 6"H x 32"W OPENING AT BOTTOM CENTERED  
 NOTE 2: 2-4" DIAMETER HOLES - 2" DOWN - 4" OFF CENTER - 8" BETWEEN HOLES  
 NOTE 3: 9"H x 24"W OPENING AT TOP CENTERED

**SIDE SECTION**



**TOP VIEW**

WEIGHT: 14,670 LBS

**NOTE:**

THIS TANK IS NOT DESIGNED FOR VEHICULAR TRAFFIC. IF USED IN TRAFFIC AREAS A REINFORCED CONCRETE SLAB MUST SPAN THE TANK AND OVERDIG TO PROTECT THE TANK.

**OPTIONS:**

- GRADE RISERS (DONUTS)
- FRAME & COVERS
- LARGER INLET & OUTLET
- BIO-GEM ENZYME ADDITIVE
- SEALANT

**1000 GALLON REINFORCED CONCRETE GREASE INTERCEPTOR**

EXCAVATION SIZE: 9'L x 6'W

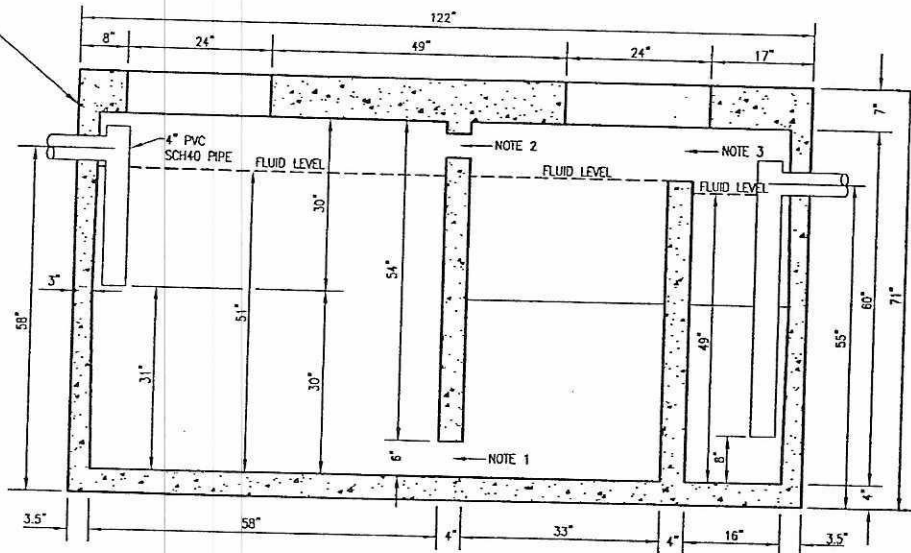


DATE: 1/21/05  
 DRAWN BY: DLS

1000 GALLON REINFORCED  
 CONCRETE GREASE INTERCEPTOR

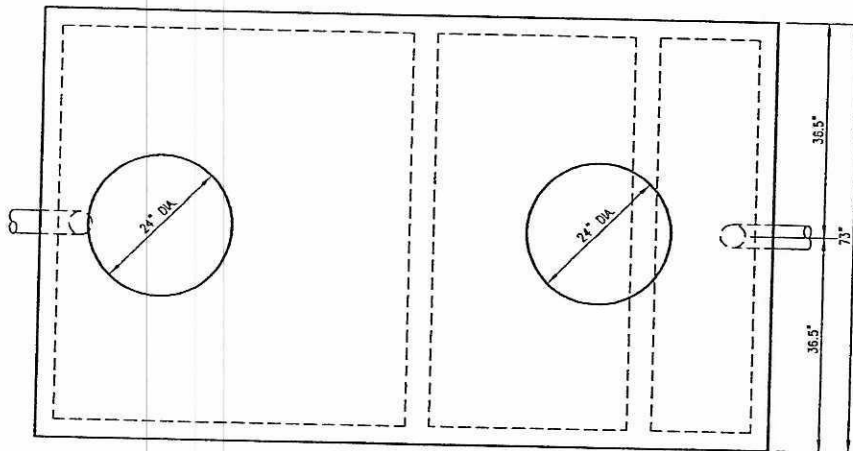
GREASE TRAP  
 (1000 GALLON)

ADD RISER SECTIONS TO GREASE INTERCEPTOR PER VILLAGE OF SWANSEA SEWER REQUIREMENTS TO ACHIEVE FINISH GRADE ELEVATION



NOTE 1: 6'H x 32'W OPENING AT BOTTOM CENTERED  
 NOTE 2: 2-4" DIAMETER HOLES - 2" DOWN - 4" OFF CENTER - 8" BETWEEN HOLES  
 NOTE 3: 9'H x 24'W OPENING AT TOP CENTERED

**SIDE SECTION**



**TOP VIEW**

WEIGHT: 14,670 LBS

NOTE:  
 THIS TANK IS NOT DESIGNED FOR VEHICULAR TRAFFIC. IF USED IN TRAFFIC AREAS A REINFORCED CONCRETE SLAB MUST SPAN THE TANK AND OVERDIG TO PROTECT THE TANK.

OPTIONS:  
 GRADE RISERS (DONUTS)  
 FRAME & COVERS  
 LARGER INLET & OUTLET  
 BIO-GEM ENZYME ADDITIVE  
 SEALANT

**500 GALLON REINFORCED CONCRETE GREASE INTERCEPTOR**

EXCAVATION SIZE: 11'L x 7'W



DATE: 1/21/05  
 DRAWN BY: DLS

1500 GALLON REINFORCED  
 CONCRETE GREASE INTERCEPTOR

GREASE TRAP  
 (1500 GALLON)